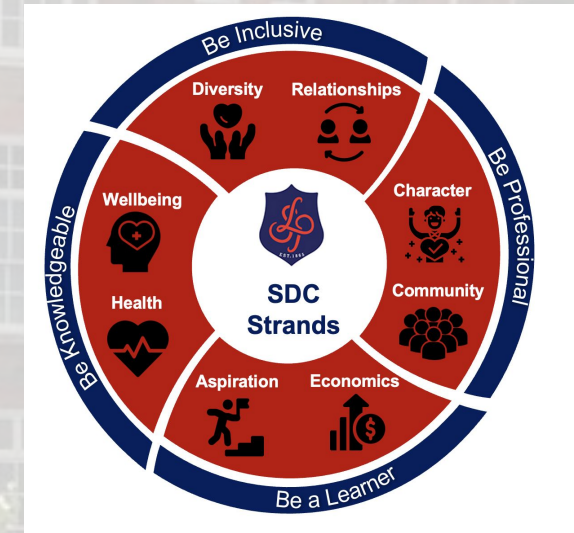


Assembly Theme:

Determination – Maths Faculty
Be A Learner & Be Professional

SDC Calendar – Upcoming Events:

- ✓ Year 7 & 8 Anti - Bullying Workshop. 9th Nov 23
- ✓ Year 10 – RSHE Workshop. 23rd Nov 23
- ✓ Extended Tutorial. 28th Nov 23
- ✓ CDD2 – 12th Dec 23
- ✓ Heads Reward Breakfast. 13th Dec 23
- ✓ Raising & Giving Week . WB 11th Dec 23



Follow us on Twitter for updates:
[@langdon_park](https://twitter.com/langdon_park)



The LPS Way - 4 BEs



Be Professional

To be proud of myself and my school and strive to be my best self at all time .



Be Inclusive

To value and be respectful to everyone in the school community



Be A Learner

To commit to always trying your best, being resilient and working hard.



Be Knowledgeable

I will take opportunities to try new things, participate and work without supervision.

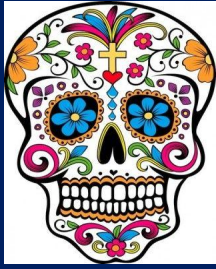


PROFESSIONAL

INCLUSIVE

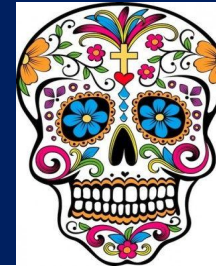
A LEARNER

KNOWLEDGEABLE



El día de los Muertos

Day of the dead



Come and enjoy **El día de los Muertos (Day of the dead)** – a celebration that occurs in **Mexico** every year to honour the life of people who passed away.

There will be two cross-curricular events taking place.

Wednesday 1st of November - lunchtime

Art 1 with Miss Gray – Day of the Dead mask masking

MFL1 with Miss Ranalli – learn songs and play Spanish games to improve your cultural knowledge and vocabulary

Chocolates for early comers 😊





Achievement



A HUGE Well Done to the following forms who achieved the most achievement points in their year group!

7N – 140

8P – 252

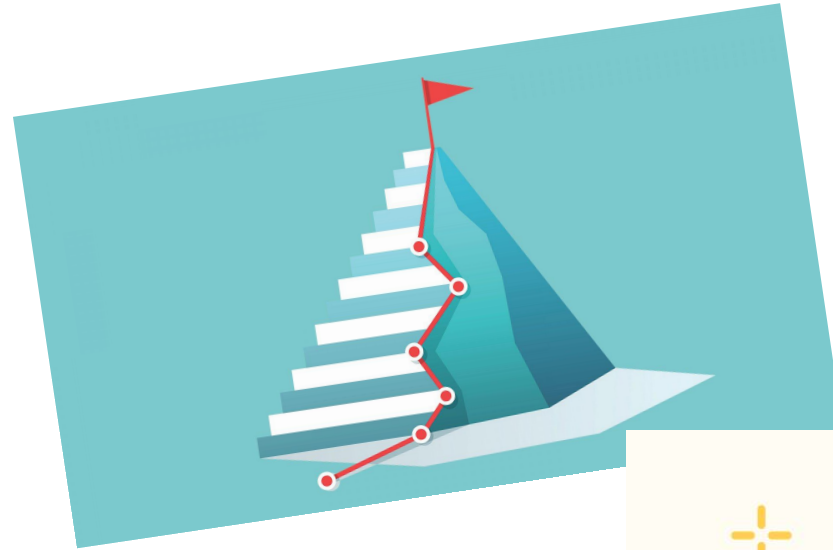
9N – 145

10D – 218

11D – 37

12L – 50

13P - 20





Anti- Bullying Campaign



At Langdon Park, promoting inclusivity and creating a safe space for ALL.

It is important that we build empathy and create a warm and welcoming school community that showcases kindness, respect and goodwill.

Each week, in our student bulletin, we will now have the opportunity to discuss bullying, its effects and how, together, we can tackle issues related to bullying.



This term, we will be focusing on building **empathy**.

PROFESSIONAL

INCLUSIVE

A LEARNER

KNOWLEDGEABLE



Anti- Bullying Campaign



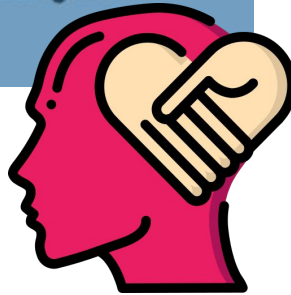
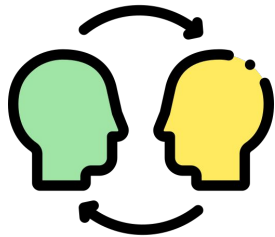
BUILDING EMPATHY

CHALLENGING BULLYING

JACK

"I do not like football and I have started to be picked on by some boys in another class. They call me "gay" and yesterday in the toilets they told me I should change school because they do not like gay people."

Note this is an opportunity to discuss why using the word 'gay' as an insult is wrong



Building empathy: Walk in their shoes!

Discuss with your partner:

- What thoughts do you think are running through Jack's head? What feelings do you think he is experiencing? What helps you guess this?
- Why is using the word 'gay' problematic as an insult? What excuse do you think the boys teasing Jack might use?
- What do you think he might do after this bullying experience? What long/short term consequences might this have for Jack?
- If you were with Jack, or witness to his experience what would you do? (Be honest!)

PROFESSIONAL

INCLUSIVE

A LEARNER

KNOWLEDGEABLE



4Es Student Bulletin

Week 1B

Week Beginning 30.10.23

***Have a great
week!***

PROFESSIONAL

INCLUSIVE

A LEARNER

KNOWLEDGEABLE