

Assembly Theme:

Student Leadership – Be Professional
Mr O’Hara

SDC Calendar – Upcoming Events:

- ✓ 4 BEs Target setting week – WB 5th September
- ✓ Form Rep applications open – 11th September
- ✓ Enrichment Fair – 20th September
- ✓ Autumn Enrichment Launch – 20th September
- ✓ Form Rep Applications Closes – 22nd September
- ✓ Head’s Award Breakfast – 18th October



Follow us on Twitter for updates:
[@langdon_park](https://twitter.com/langdon_park)



The LPS Way - 4 BEs



Be Professional

To be proud of myself and my school and strive to be my best self at all time .



Be Inclusive

To value and be respectful to everyone in the school community



Be A Learner

To commit to always trying your best, being resilient and working hard.



Be Knowledgeable

I will take opportunities to try new things, participate and work without supervision.



PROFESSIONAL

INCLUSIVE

A LEARNER

KNOWLEDGEABLE



Centralised Detentions



Detention Expectations:

- ✓ Detentions will continue to run centrally on the same day as the sanction being set.
- ✓ You can receive up to 60 minutes on one day.
- ✓ Detentions for behaviour points will be sat by students on the following day
- ✓ You can also receive 2-hour leadership detention on a Friday.
- ✓ You will be taken down to detentions by your class teacher in your P3 lesson, which will take place in the canteen every night after school.
- ✓ You will receive 1 warning at a detention. If you fail to meet expectations the detention is escalated, and you will be sent home.
- ✓ If you walk out of the detention, your detention will be escalated.

You can still receive a detention from your classroom teacher for the following:

- Failed homework
- Late to lesson

- ✓ If you fail a 2-hour leadership detention, you will complete 1 day in RESET and must still complete the 2-hour detention.
- ✓ 2x leadership detentions in a week set leads to 2x days in RESET (this overrides the detention)

PROFESSIONAL

INCLUSIVE

A LEARNER

KNOWLEDGEABLE



What can I receive a detention for?



30 Minute Detention:

- 1 Behaviour Point
- Third Warning in classroom
- Uniform infringement
- Fake nails and eyelashes
- Chewing gum
- LP3 (tutor only) – planner, reading book and pencil case.
- No PE kit (first offence in term)
- Jumping/pushing in canteen queue

**Please note that these are used as guidelines for the minimum sanction.*

60 Minute Detention:

- Failed 30-minute detention
- Failed to attend lunch time late detention
- Swearing (non-direct)
- Possession and use of low level banned item (including mobile device and headphones)
- Throwing items in classroom (no contact made with teacher/peer)
- Throwing/spraying water (includes piercing hole in bottle) Out of bounds / wrong area at break and lunch
- No PE kit (second offence in term)
- Play Fighting
- Persistent uniform infringement
- Lesson On-Call

Leadership Detention:

- Failed 60-minute detention
- More than 60 mins accumulated in 1 day.
- Graffiti and/or Vandalism
- Repeatedly failing to follow staff instructions.
- Bringing school into disrepute in the community.



Uniform Expectations

The Basics

- ✓ Top buttons should be **done up at all times** and ties need to be **covering all shirt buttons.**
- ✓ Shirts should **remain tucked in** at all times.
- ✓ Shoes should be of a **black polishable material** and below the ankle – no boots!
- ✓ You can wear **one small plain** stud in each earlobe – gem stone earrings are **NOT** permitted!
- ✓ Wrist watches are the only other jewellery permitted.
- ✓ Coats and scarves will need to be **plain dark in colour.**



Key Reminders

- ✓ You can wear **one small plain** stud in your nose – nose rings are **NOT** permitted!
- ✓ Tram lines or other shaved shapes in the hair and ‘bar codes’ in eyebrows are **not permitted.**
- ✓ Tinted or cosmetic contact lenses and decorative dental wear are **not permitted.**
- ✓ Fake nails/eyelashes and nail varnish are **NOT** permitted. You will be asked to remove these when you enter the school.
- ✓ Hoodies should **NOT** be worn at any point – if seen these will be confiscated.
- ✓ Blazers should be on show at all times, including when travelling to and from school.

Uniform infringements will lead to a same day 20 minute detention



Student Rep – Year 7, 8, 9, 10 and 12



THE INFORMATION

STUDENT REPS ARE ROLE MODELS:

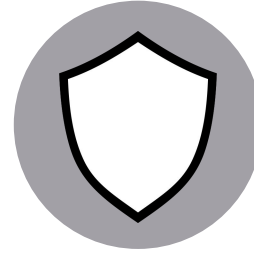
- ✓ Behave in exemplary manner in all lessons.
- ✓ 96% attendance and impeccable punctuality.
- ✓ Uniform is always perfect
- ✓ Sharing whole school vision and promoting 4Bes
- ✓ Outstanding role model whole support other students.

ROLES AND RESPONSIBILITIES:

- ✓ Will be the best ambassadors for the school.
- ✓ Show visitors around the school.
- ✓ Will help interview candidates.
- ✓ Will run assemblies.
- ✓ Will contribute to the overall leadership of the school.

BENEFITS:

- ✓ Student Rep badge.
- ✓ Have a voice in making the school better.
- ✓ A range of rewards and privileges.
- ✓ Opportunity to develop leadership skills.
- ✓ Opportunity to work in the wider community.



THE APPLICATION PROCESS

APPLICATION FORM:

- ✓ You will need to complete the google form by **Friday 22nd September**
- ✓ You will need to answer two questions:
 - Explain why you would make an excellent student rep? (200 words)
 - As a STUDENT REP, how would you support the 4Bes ethos of the school? (200 words)

THE TIMELINE:

18/09: Launch assembly
22/09: Application Deadline
06/10: Student Leadership Training

PROFESSIONAL

INCLUSIVE

A LEARNER

KNOWLEDGEABLE



Enrichment



“Our enrichment programme is essential to our students spiritual, moral, social and cultural development. We offer a varied and engaging programme of clubs and activities that give our students the opportunity to be challenged and inspired.”



**LANGDON PARK
ENRICHMENT FAIR**

- ✓ It is expected that all students at LPS attend **at least one** enrichment club.
- ✓ All students will have the opportunity to sign up to enrichment at **lunchtime** on **Wednesday 20th September.**
- ✓ A centralised timetable is being collated and all clubs will start on **Monday 25th September.**
- ✓ **You will be registered** at enrichment clubs to ensure those attending on a regular basis receive rewards and praise.
- ✓ **Snacks will be available** for after school enrichment sessions.

PROFESSIONAL

INCLUSIVE

A LEARNER

KNOWLEDGEABLE



Anti- Bullying Campaign



This year, we have an exciting opportunity to form a student-led Anti-Bullying forum.

Here at Langdon Park, we believe strongly in celebrating diversity, promoting inclusivity and creating a safe space for ALL.

We are looking to train individuals who are committed to promoting positive friendships, empathy and community values across our school.

STOP BULLYING

PHYSICAL
BULLYING

VERBAL
BULLYING

SOCIAL
BULLYING

CYBER
BULLYING



If you are interested in supporting our anti bullying campaign, or have any ideas, please come see Ms Adam in E3 on Wednesday 20th September at Lunch Time

PROFESSIONAL

INCLUSIVE

A LEARNER

KNOWLEDGEABLE



School Production Rehearsals- HT1

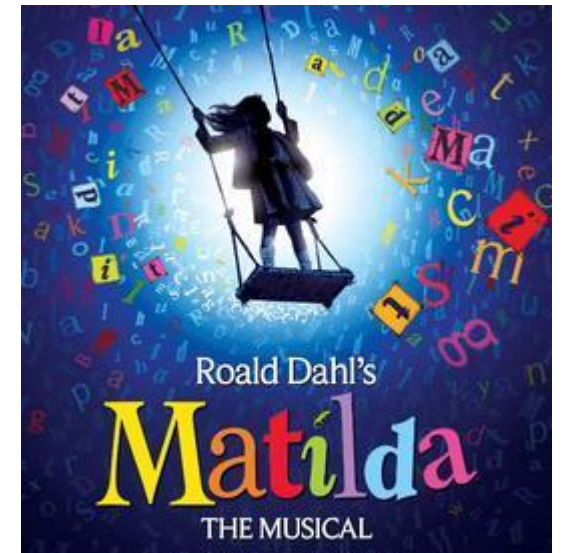


When: Every Monday, Wednesday & Thursday 3:10pm – 4:30pm

Where: Dance Studio

Who: All cast & company (Actors, Dancers and Musicians)

Don't forget: Script extracts, song lyrics and your signed contract





Be Professional

4Es

Professional...Inclusive...A Learner...Knowledgeable

DID YOU KNOW?

Poor punctuality
- less chance of success

Very poor punctuality
- serious impact on education and reduced opportunities

PUNCTUALITY

If any of these sound familiar then it's time to fix your timekeeping!

- "sorry I woke up late and then walked too slow"
- "I didn't want to get out of bed this morning"
- "I missed the train/bus so decided to walk slowly"
- "My school uniform hadn't dried last night"

5 MINUTES LATE PER DAY
Adds up to 3 days lost school time!

10 minutes = 6.5 school days per year

15 minutes = 10 days lost per school year

20 minutes = 13 lost school days per year

30 minutes = 19 lost school days per year

PROFESSIONAL

INCLUSIVE

A LEARNER

KNOWLEDGEABLE



Be Inclusive-Support for Students



Do you have any queries, worries or suggestions?



Write and put in **THE BOX** located in the library.

Langdon Park
In-School Therapist

YOU ARE NOT ALONE!

Are you struggling with difficult thoughts and feelings?

Are you feeling...

sad angry scared confused

Do you feel you need someone to talk to or a safe space to express how you feel?
The In-School Therapist may be able to offer support and a safe place to talk.
This can also be a place to express how you feel through creative methods such as role play or drawing.

If you would like to know more please contact Lily Begum, Ms O'Brien or any other member of the Inclusion Team.

Students are encouraged to tell an adult if you have any worries no matter how small you may think they are. Inclusion staff wear a **yellow lanyard**.



PROFESSIONAL

INCLUSIVE

A LEARNER

KNOWLEDGEABLE



Professional...Inclusive...A Learner...Knowledgeable

4Es Student Bulletin

Week 3A

Week Beginning 18.09.23

***Have a great
week!***

PROFESSIONAL

INCLUSIVE

A LEARNER

KNOWLEDGEABLE