

Week 6A

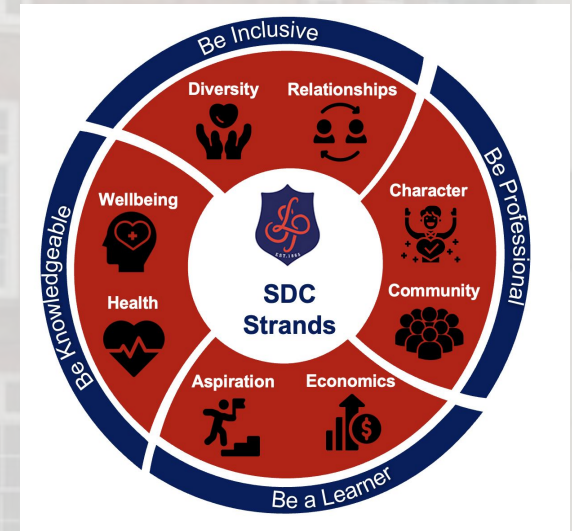
Week Beginning 25.03.24

Assembly Theme:

Achievement Assembly – Heads of Year 4Be's

SDC Calendar – Upcoming Events:

- ✓ Year 10 & 12 Prefect Application **OPEN** – 11th March 24
- ✓ Year 10 & 12 Prefect Application **CLOSE** – 28th March 24
- ✓ Extended Tutorial – 27th March 24



Follow us on Twitter for updates:
@langdon_park



The LPS Way - 4 BEs



Be Professional

To be proud of myself and my school and strive to be my best self at all time .



Be Inclusive

To value and be respectful to everyone in the school community



Be A Learner

To commit to always trying your best, being resilient and working hard.



Be Knowledgeable

I will take opportunities to try new things, participate and work without supervision.



PROFESSIONAL

INCLUSIVE

A LEARNER

KNOWLEDGEABLE



Punctuality Expectations



Having good punctuality is a key part of behavior expectation at Langdon Park School.

You are expected to be on time for school in the morning, as well as be **on time for lessons.**

If you have not arrived into your lesson by the time the second pips have gone (after break and lunch) **your teacher will mark you as late.**

- The gates close at **8.37am.**
- You need to be seated in your **form room by 08.40am.**
- If you are on site and not in your form room, then you will be marked late and will get a **20 minute lunch detention** that day.
- Failure to attend will result in a **60 minute detention** the same day in Maths 7 (near the PE office).
- Anybody who has failed to attend the 60 min detention will have a **2 hour SLT detention on Friday.**
- Any student who fails to attend and complete the SLT detention may spend a day in **Reset** with parents being invited in for a meeting.
- ***If you are a late for genuine reason like a medical appointment, let the Reception staff or your Head of Year know and they may agree to remove the detention.***

What is stopping you from being punctual?

Are you sleeping on time? Have you set your alarms to give you plenty of time to get ready?

Are you getting organised the day before?

Who can help you improve your punctuality?

PROFESSIONAL

INCLUSIVE

A LEARNER

KNOWLEDGEABLE



Banned Food Items



Items such as fizzy drinks and chewing gum is not allowed.

If found they will be DISPOSED of.

You will also get a behaviour point leading to a 30 minute detention.





Student Leadership Duties



Student Rep Lunch Duty Rota

Duty Role	Monday	Tuesday	Wednesday	Thursday	Friday
Sign off	Faiza Miah	Rothan Debnath	Faiza Miah	Rothan Debnath	Faiza Miah
Year 7 & 8 Playground (Year 10)	Sonia Merabet Yaseen Hussain	Laalbah Muslimah, Yaseen Ali Ibrahim Jalloh,	Ahsanur Rahman, Anaam Khan Anisha Tasnim	Zakaria Islam, Kinza Hoque	Tahmid Aziz, Mahjabin Bokh
Library (Year 11)	Adam Zoufita Haytam Rami	Latisha Paul Liuma Uddin Muba	Crystal Yaa Atiogbe	Chloe Bohan Mohammed Eyesin Miah	Radia Subha Emaan Ali
A Block – concourse doors (Year 11)	Michaela Sheehan Jilani Shah Taseen	Eliza Begum Sayeda Anna	Sameerah Begum	Szosia-Selena Mathurin	Sofia Musaeva
Library Stairs/entrance (Year 12 and 13)	Karine Ellane Esteves Vincente Samira Hassan	Nawaz Ahmed Islam, Mahie Mohammed	Yakzane Djibril	Papla Pir	Zahera Shaddek
Canteen Inside (Year 12 and 13)	Fahema Begum	Ikram Merabet Goni. Mohammed	Atiqa Rahman	Madeha Haque Omarah Linda	Naima Akter
Canteen Outside (Year 11 &)	Rothan Debnath	Faiza Miah Inaya Jara	Noelia Lawa Ebulbata	April Gimenez-Jumeau Syra Ahmed	Zakiyah Ali
Green Team – Pitch (Year 9)	Thameedul Ali Omou Tounkara Samirah Miah	Abdur Miah Aliza Abdin Imtiaz Yunis	Mohammed Amaan Mehrab Miah	Nameya Uddin Harley Hines	Tameem Amin Sabrin Mitu

A reminder to students who are prefects and/or student reps. Please make sure you are aware of the day your duty falls on. It is imperative that students are fulfilling their duties and upholding the ethos of the school.

PROFESSIONAL

INCLUSIVE

A LEARNER

KNOWLEDGEABLE



Anti- Bullying Campaign



**STAND UP!
SPEAK OUT!
STAY SAFE!**

Be inclusive.. to value and be respectful to everyone in the school community and beyond.



S SAY something:
We all have a responsibility to report any incidents of bullying

T TREAT others as you wish to be treated:
Fairly, with dignity and without discrimination

A APPROPRIATE use of language:
At all times, especially when referring to someone's race/religion/ability/ gender/sexuality.

N NEVER turn a blind eye:
Pledge to be an up-stander against bullying behaviour by supporting your fellow students.

D DIVERSITY is key:
We embrace diversity and encourage difference here at Langdon Park we believe everyone should feel comfortable with who they are.

U USE of social networks:
Be positive and appropriate online, we do not tolerate cyberbullying.

P PRIVACY must be respected:
We do not interfere with others belongings, we do not spread rumours, and we do not reveal secrets or personal information with the intent of causing harm or upset to others.



PROFESSIONAL

INCLUSIVE

A LEARNER

KNOWLEDGEABLE

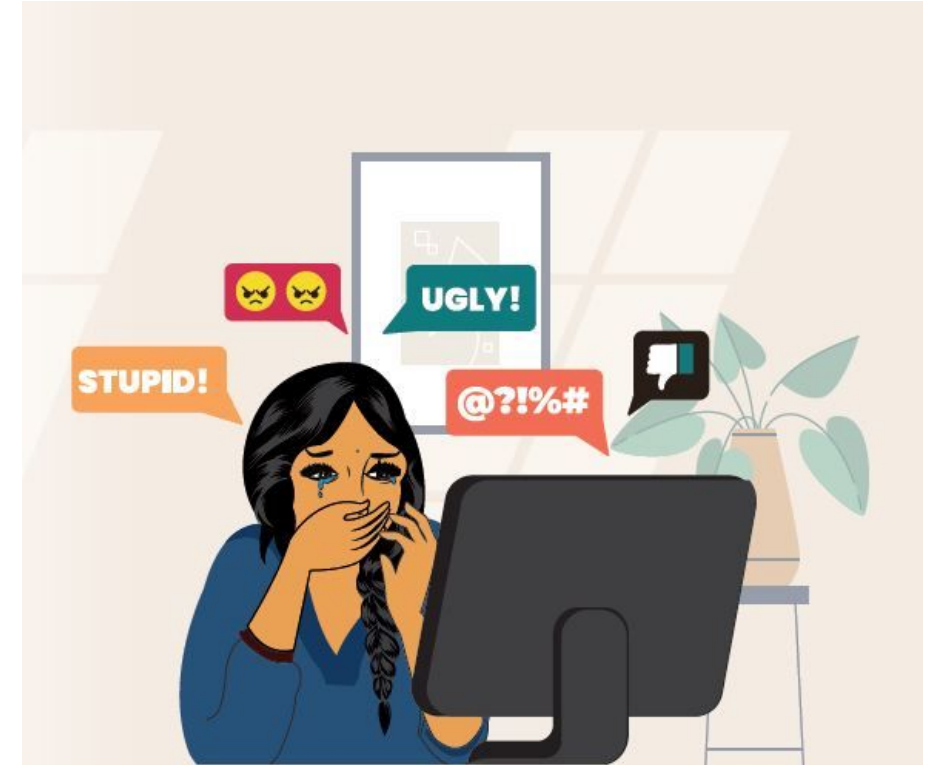


Anti- Bullying Campaign



During a sleepover, Maya secretly takes unflattering photos of her friend, Sam, goofing around. Later, she shares them online with mocking captions. Sam discovers the posts and feels humiliated.

- How could you support Sam?
- What actions could Sam take to address cyberbullying?
- How can you promote empathy and kindness online among your peers?



PROFESSIONAL

INCLUSIVE

A LEARNER

KNOWLEDGEABLE



Anti- Bullying Campaign



Last Thursday was World Down Syndrome Awareness Day, celebrated yearly on **March 21** since 2007. This day highlights the uniqueness of the extra 21st chromosome, which causes Down syndrome. People with Down syndrome have various abilities and may need different levels of support. However, like everyone, they have their own personalities, preferences, and strengths. Next **Tuesday April 2nd** is World Autism Awareness day. Autism is a special way of thinking and learning where the brain works uniquely, impacting socialising, communicating, and behaviours. It's important to celebrate neurodivergent individuals like those with Down syndrome and Autism Spectrum Disorder (ASD). We should be inclusive, recognizing and respecting differences, whether in learning styles or abilities. Everyone deserves acceptance and understanding, promoting a world where diversity is celebrated and embraced.



PROFESSIONAL

INCLUSIVE

A LEARNER

KNOWLEDGEABLE



Anti- Bullying Campaign



<https://www.youtube.com/watch?v=FN2UNmLzai8>



<https://www.youtube.com/watch?v=buNpQREv-Ms>

S SAY something:
We all have a responsibility to report any incidents of bullying

T TREAT others as you wish to be treated:
Fairly, with dignity and without discrimination

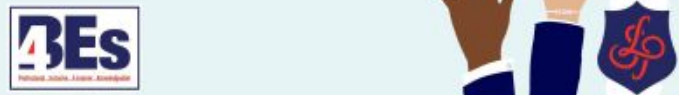
A APPROPRIATE use of language:
At all times, especially when referring to someone's race/religion/ability/ gender/sexuality.

N NEVER turn a blind eye:
Pledge to be an up-stander against bullying behaviour by supporting your fellow students.

D DIVERSITY is key:
We embrace diversity and encourage difference here at Langdon Park we believe everyone should feel comfortable with who they are

U USE of social networks:
Be positive and appropriate online, we do not tolerate cyberbullying.

P PRIVACY must be respected:
We do not interfere with others belongings, we do not spread rumours, and we do not reveal secrets or personal information with the intent of causing harm or upset to others.



PROFESSIONAL

INCLUSIVE

A LEARNER

KNOWLEDGEABLE



Student ambassador led drop-ins



What: Wellbeing drop in clinic

Where: Spotlight Games room

When: Every **Monday, Tuesday and Thursday**
lunchtimes
(12.45-1.15pm)

Why: If you need a safe space, want to speak to students who have been trained to listen to issues surrounding bullying, friendship issues and mental health, or feel a little lonely, this is the place to be!

Who: Your Anti-Bullying Ambassadors

PROFESSIONAL

INCLUSIVE

A LEARNER

KNOWLEDGEABLE



Professional...Inclusive...A Learner...Knowledgeable

LPS Student Bulletin

Week 6A

Week Beginning 25.03.24

***Have a great
week!***

PROFESSIONAL

INCLUSIVE

A LEARNER

KNOWLEDGEABLE