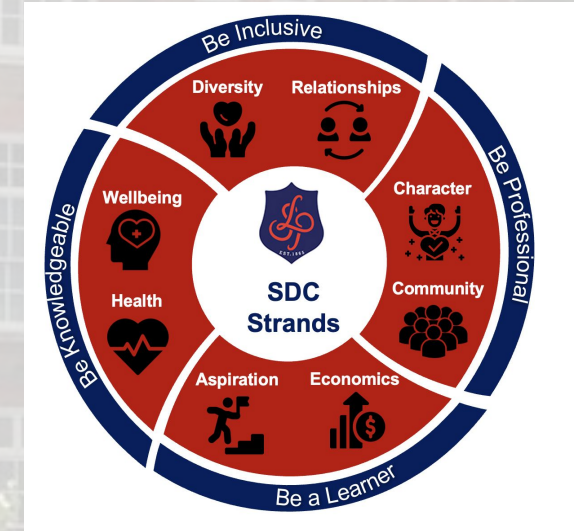


### Assembly Theme:

Kindness – Ms Morrison & Ms Adam  
Be Inclusive

### SDC Calendar – Upcoming Events:

- ✓ CDD Day 1 – 12<sup>th</sup> October
- ✓ LPS Food Bank Fundraiser – 13<sup>th</sup> October
- ✓ Raising & Giving Week – w/b 16<sup>th</sup> October
- ✓ Head's Award Breakfast – 18<sup>th</sup> October
- ✓ Extended Tutorial – 18<sup>th</sup> October



Follow us on Twitter for updates:  
[@langdon\\_park](https://twitter.com/langdon_park)



# The LPS Way - 4 BEs



## Be Professional

*To be proud of myself and my school and strive to be my best self at all time .*



## Be Inclusive

*To value and be respectful to everyone in the school community*



## Be A Learner

*To commit to always trying your best, being resilient and working hard.*



## Be Knowledgeable

*I will take opportunities to try new things, participate and work without supervision.*



**PROFESSIONAL**

**INCLUSIVE**

**A LEARNER**

**KNOWLEDGEABLE**



# Centralised Detentions



## Detention Expectations:

- ✓ Detentions will continue to run centrally on the same day as the sanction being set.
- ✓ You can receive up to 60 minutes on one day.
- ✓ Detentions for behaviour points will be sat by students on the following day
- ✓ You can also receive 2-hour leadership detention on a Friday.
- ✓ You will be taken down to detentions by your class teacher in your P3 lesson, which will take place in the canteen every night after school.
- ✓ You will receive 1 warning at a detention. If you fail to meet expectations the detention is escalated, and you will be sent home.
- ✓ If you walk out of the detention, your detention will be escalated.

You can still receive a detention from your classroom teacher for the following:

- Failed homework
- Late to lesson

- ✓ If you fail a 2-hour leadership detention, you will complete 1 day in RESET and must still complete the 2-hour detention.
- ✓ 2x leadership detentions in a week set leads to 2x days in RESET (this overrides the detention)

**PROFESSIONAL**

**INCLUSIVE**

**A LEARNER**

**KNOWLEDGEABLE**



# Citizenship - Fundraiser



## Bake Sale

**FRIDAY 13TH OCTOBER 2023**

**BREAK TIME: 10:40 - 11:00**

**@ THE TRACKS**

**PROFESSIONAL**

**INCLUSIVE**

**A LEARNER**

**KNOWLEDGEABLE**



# Careers



## CAREERCON MONTHLY ON-DEMAND — ARTIFICIAL INTELLIGENCE

Catch all the insider AI advice & inspo from the industry professionals in the know. 🙌🚀

Meet the brands, employers, and industry professionals that are leading the way in the world of Work Technology 🚀

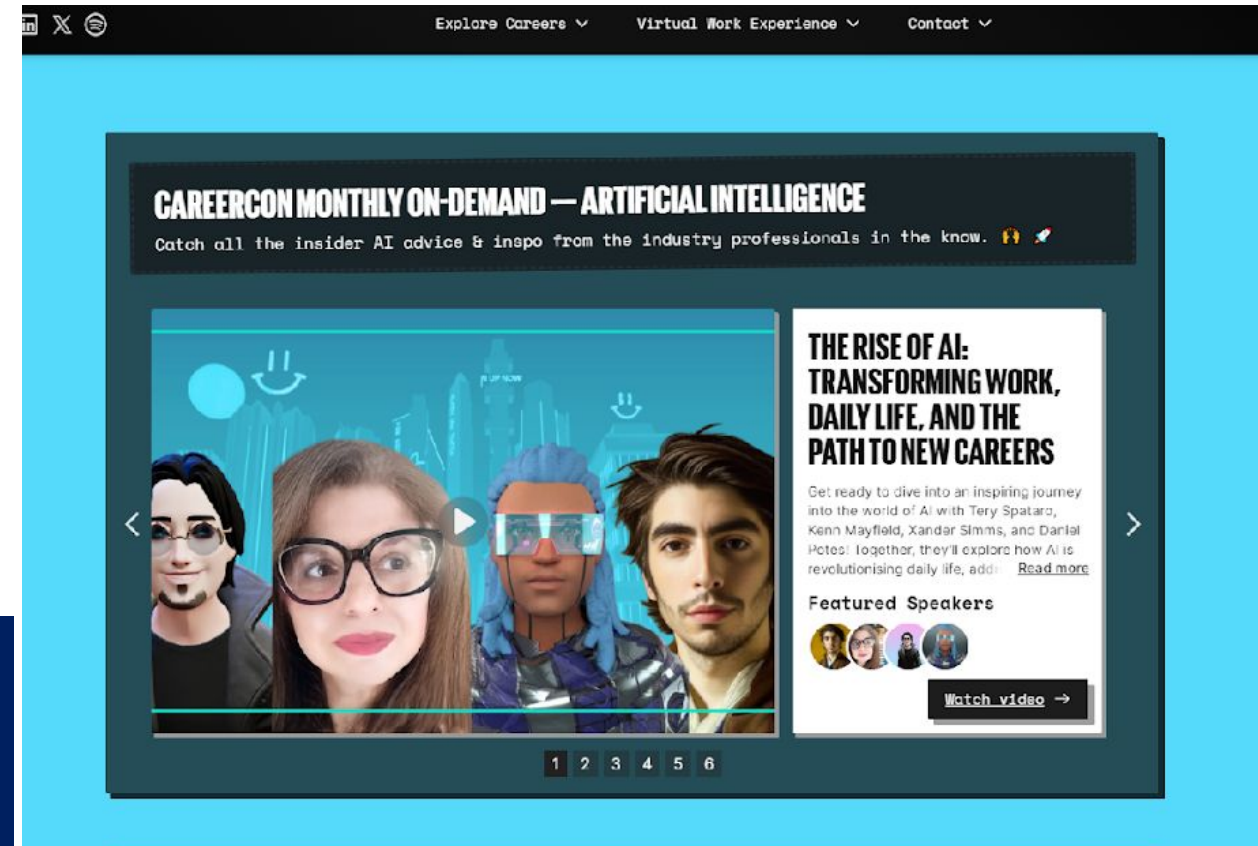
Explore the productive world of WorkTech through a live stream with top companies and inspiring speakers. Unlock valuable knowledge, from cutting-edge software and innovations to thrilling career prospects - get your questions answered by industry professionals!

For more information and opportunities, check your Careers Google Classroom for weekly updates!

Class code:

Year 7: y3t47xg Year 8: mnqht2 Year 9: u6karhj

Year 10: 3tlfvsb Year 11: lekuhpw Year 12: 76g7ymx Year 13: cdanjlf



PROFESSIONAL

INCLUSIVE

A LEARNER

KNOWLEDGEABLE



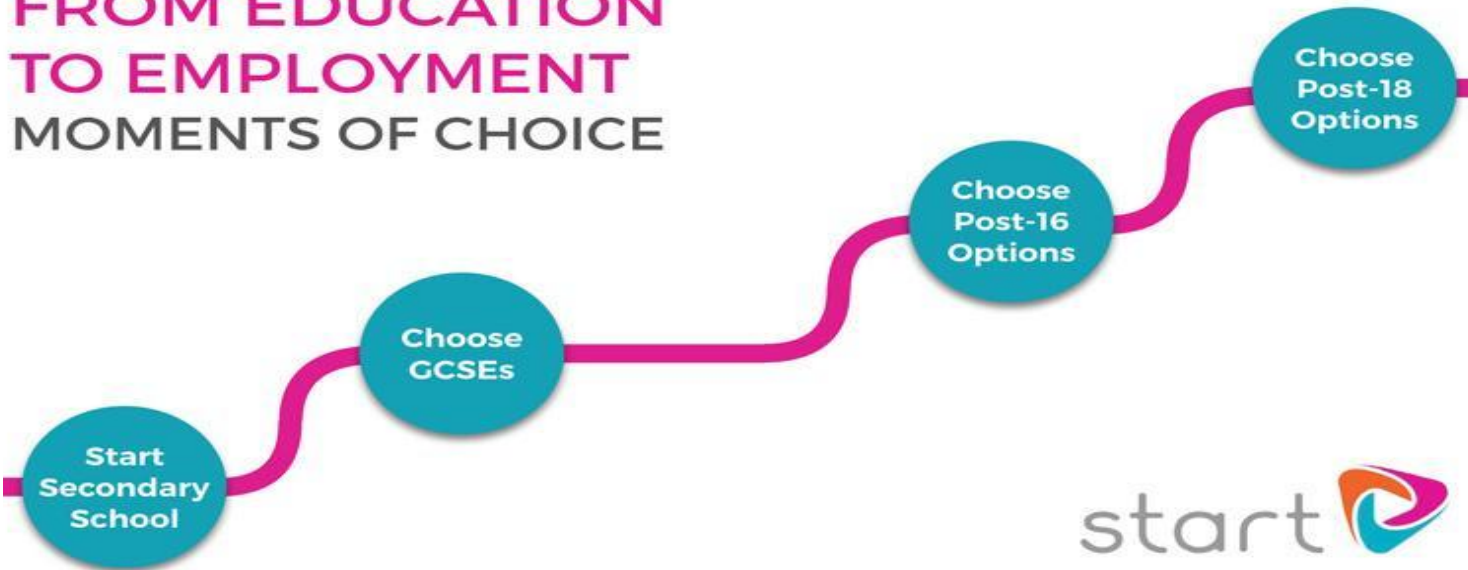
# Careers



## START CAREERS Your Personal Careers Profile

START is an online careers platform that will help you connect with your future career, develop your employability skills, and help you to explore career and study options.

### FROM EDUCATION TO EMPLOYMENT MOMENTS OF CHOICE



**See Ms Begum in the careers office for your login details!**



Connect with your career potential

careers.startprofile.com

PROFESSIONAL

**INCLUSIVE**

A LEARNER

**KNOWLEDGEABLE**

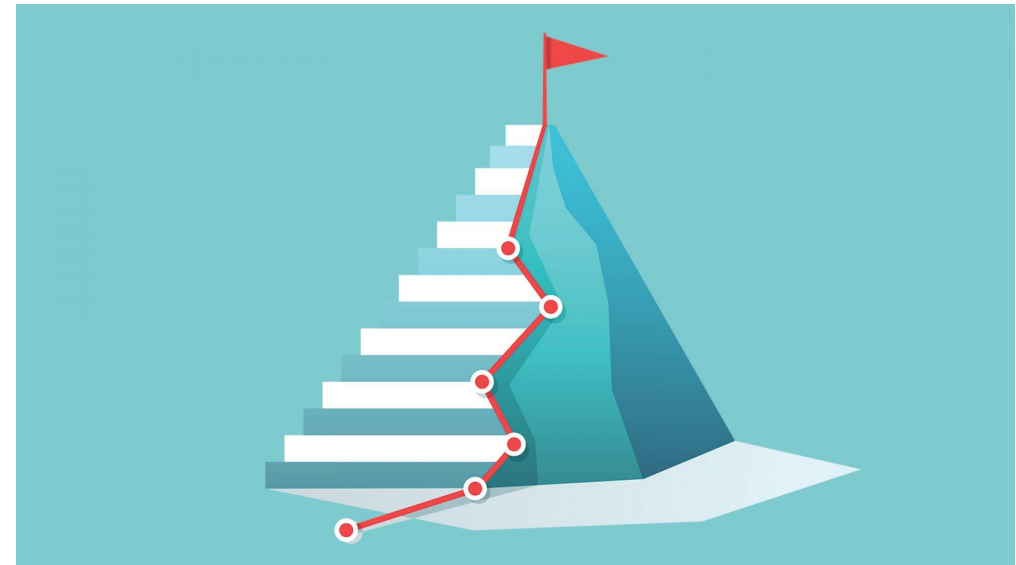


# Achievement



A HUGE Well Done to the following forms who achieved the most achievement points in their year group!

- 7N – 190
- 8N – 278
- 9A – 184
- 10D – 301
- 11P – 111
- 12N – 19
- 13N - 13



PROFESSIONAL

INCLUSIVE

A LEARNER

KNOWLEDGEABLE



# Anti- Bullying Campaign



At Langdon Park, promoting inclusivity and creating a safe space for ALL.

It is important that we build empathy and create a warm and welcoming school community that showcases kindness, respect and goodwill.

Each week, in our student bulletin, we will now have the opportunity to discuss bullying, its effects and how, together, we can tackle issues related to bullying.



This term, we will be focusing on building **empathy**.

**PROFESSIONAL**

**INCLUSIVE**

**A LEARNER**

**KNOWLEDGEABLE**





# Anti- Bullying Campaign

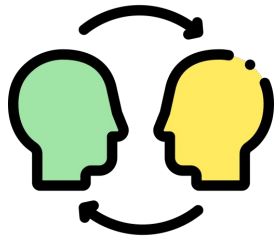
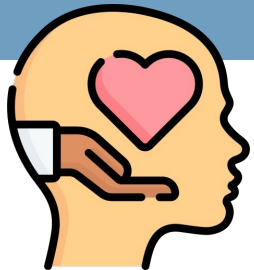


BUILDING EMPATHY

CHALLENGING BULLYING

## JULIE

"Yesterday a group of girls came up to me and told me that they do not like me because I am overweight. They said I should eat less. I do not eat much but I feel afraid that if they see me eat they will get mad at me."



## Building empathy: Walk in their shoes!

Discuss with your partner:

- What thoughts do you think are running through Julie's head?
- What feelings do you think she is experiencing? What helps you guess this?
- What do you think she might do after this bullying experience? What long/short term consequences might this have for Julie?
- If you were with Julie, or witness to her experience what would you do? (Be honest!)

PROFESSIONAL

**INCLUSIVE**

A LEARNER

**KNOWLEDGEABLE**



Professional...Inclusive...A Learner...Knowledgeable

# 4Es Student Bulletin

**Week 6B**

**Week Beginning 09.10.23**

***Have a great  
week!***

**PROFESSIONAL**

**INCLUSIVE**

**A LEARNER**

**KNOWLEDGEABLE**